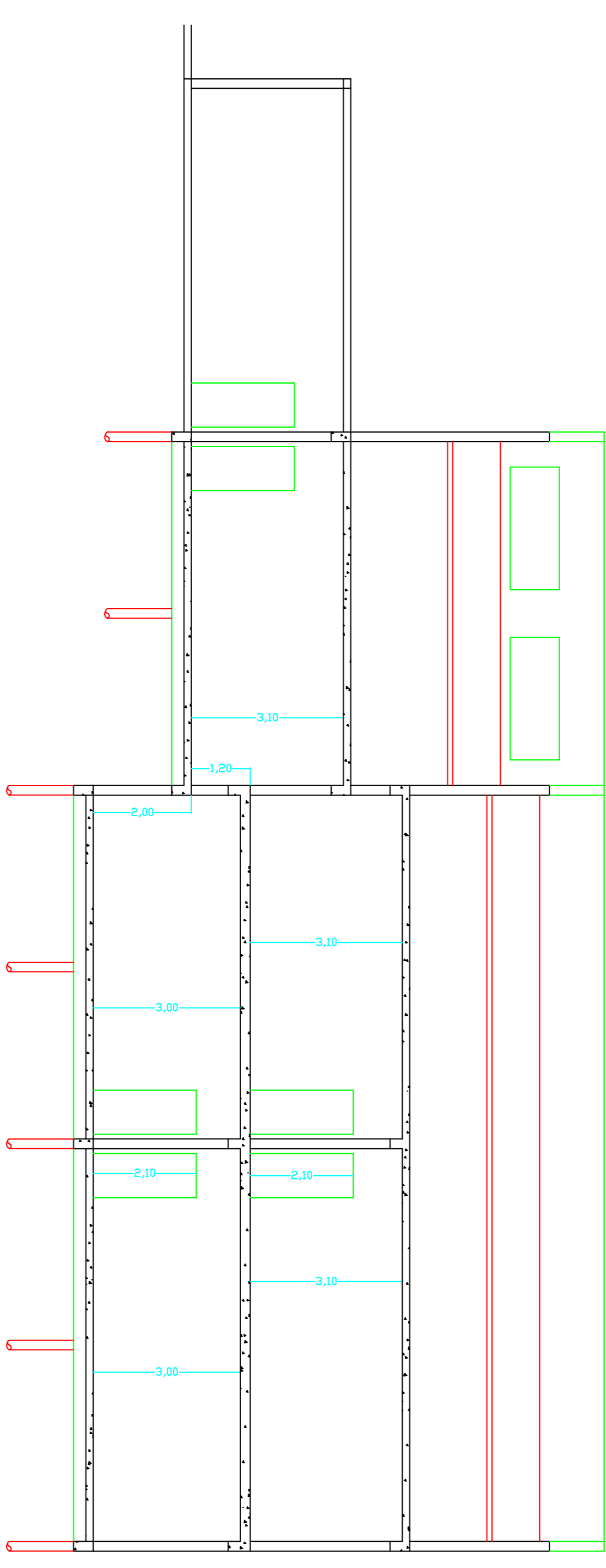
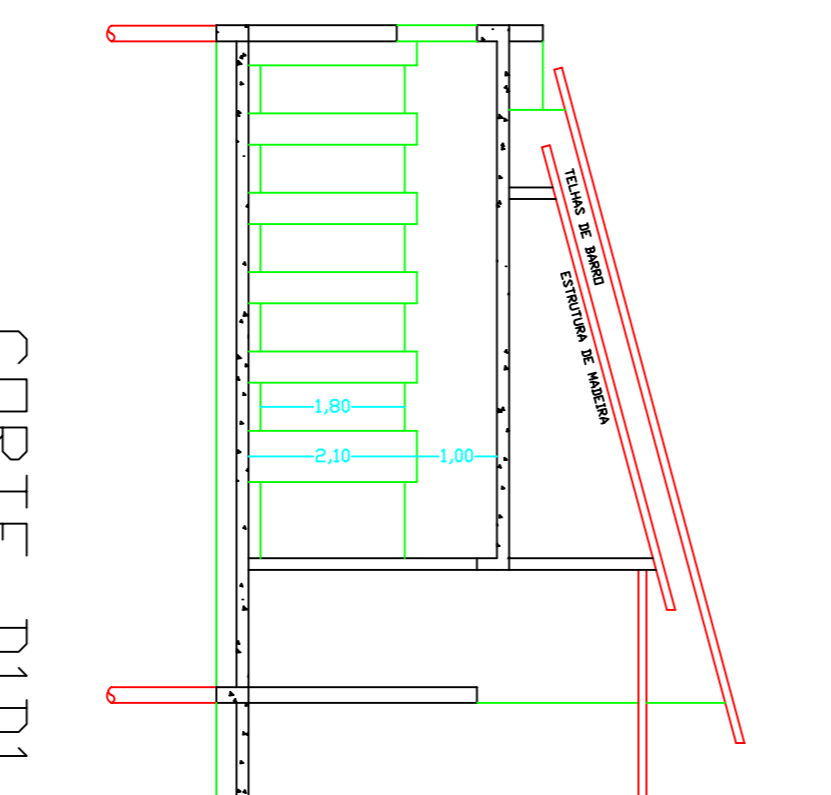


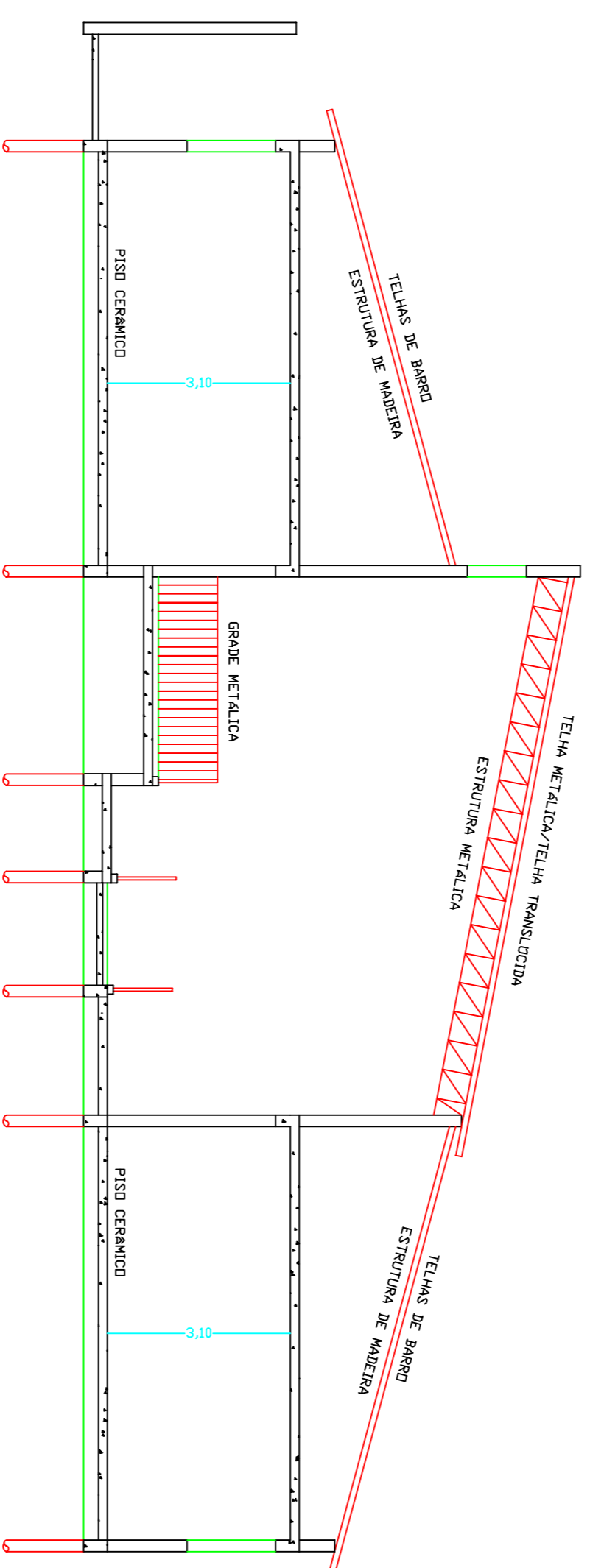
CORTE EE
ESCALA: 1:100



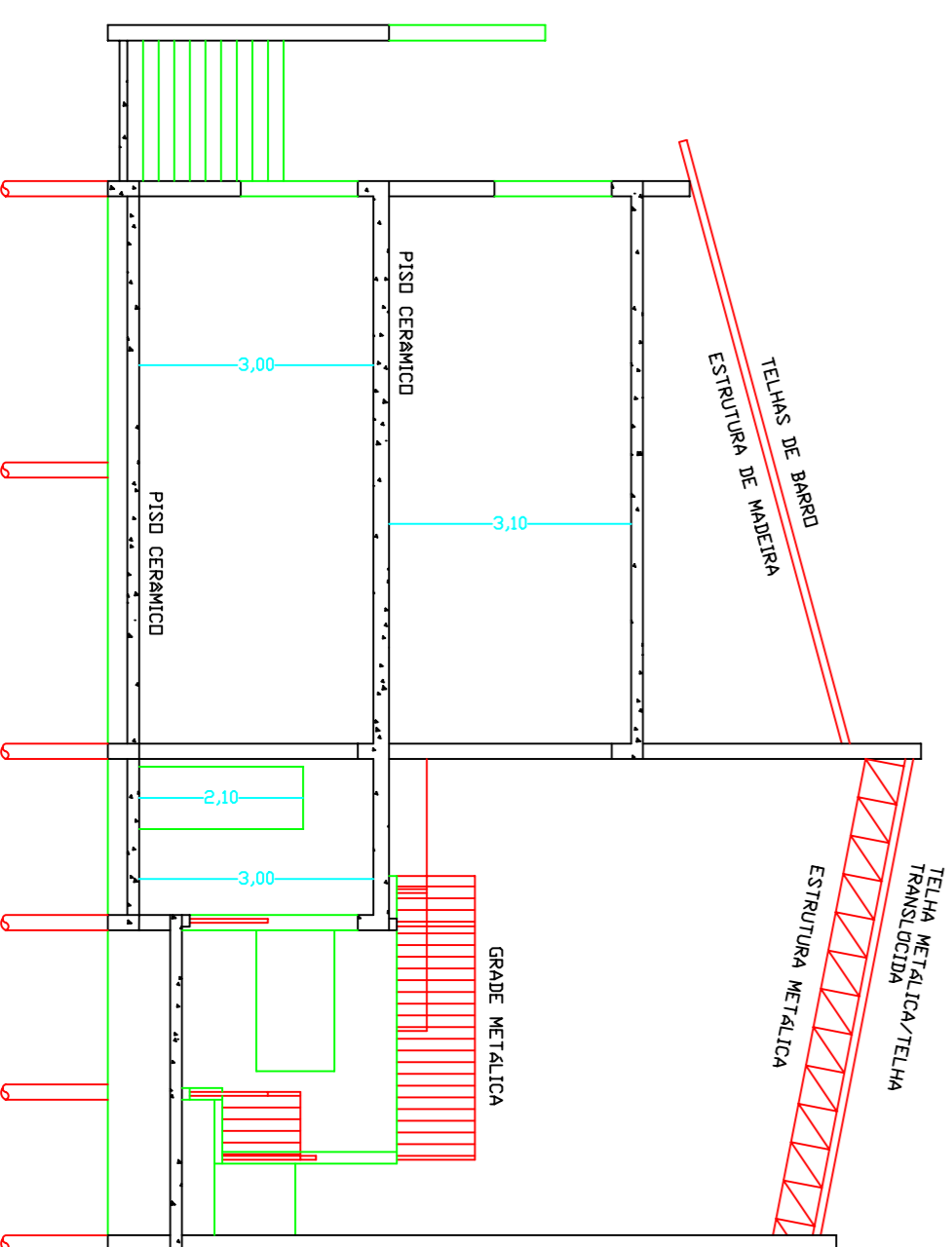
CORTE FF
ESCALA: 1:100



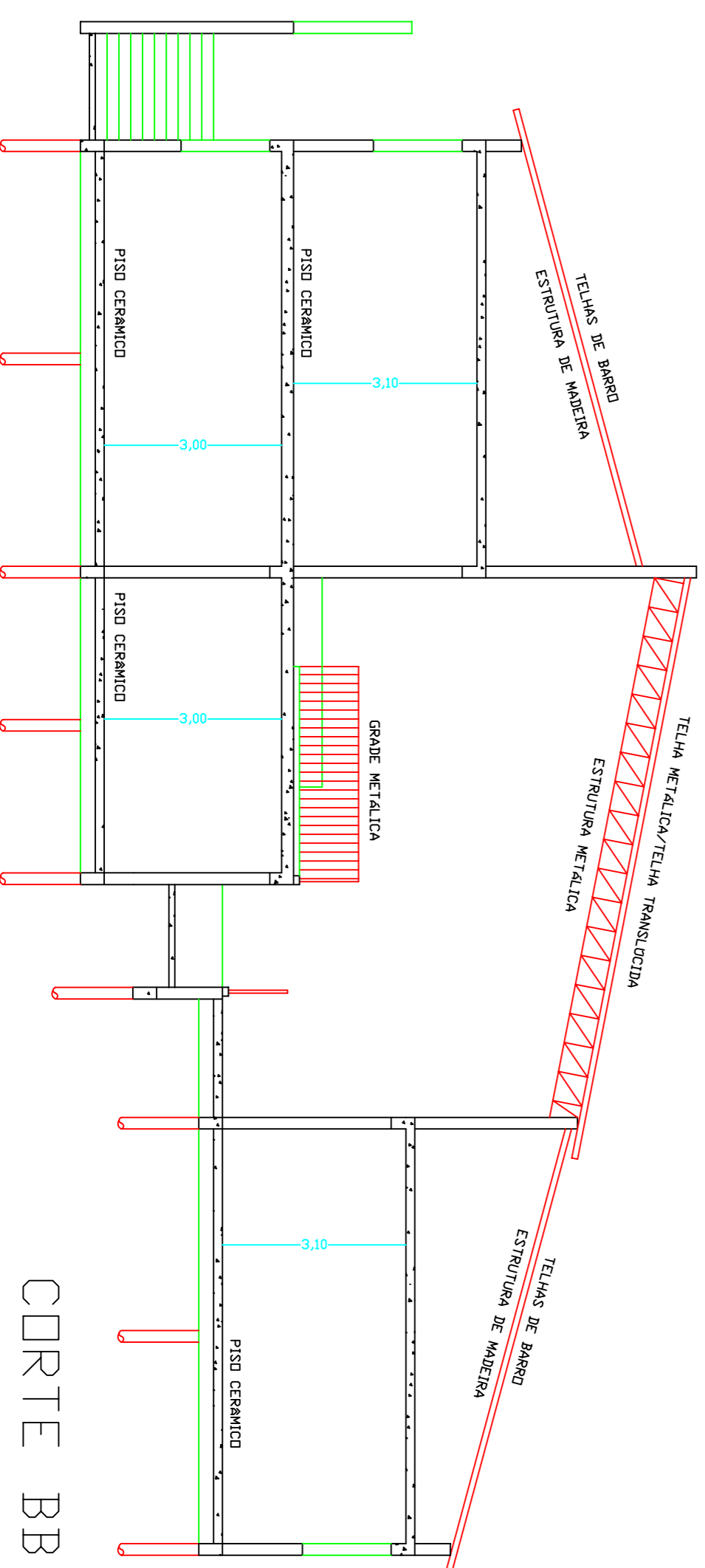
CORTE D1D1
ESCALA: 1:100



CORTE AA
ESCALA: 1:100



CORTE CC
ESCALA: 1:100



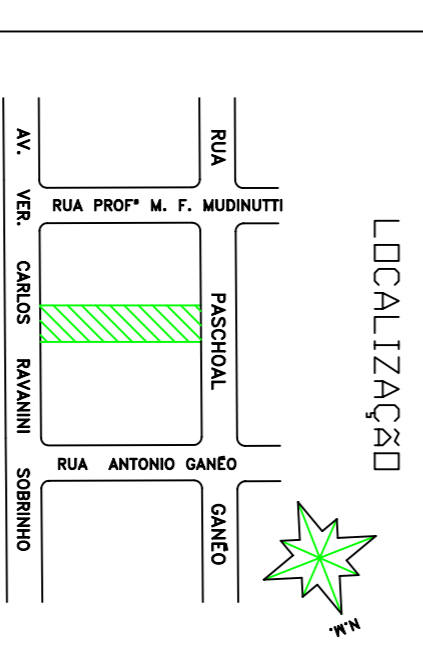
CORTE BB
ESCALA: 1:100

PROJETO DE CONSTRUÇÃO

CORTES

FOLHA
02/02
AGO/2010

OBRA: AMPLIAÇÃO ESCOLA EMF MARIA H. R. RAVANINI
 PROJ: PREFEITURA MUNICIPAL DE SANTA CRUZ DA CONCEIÇÃO
 LOCAL: RUA PASCHOAL GANEO, 1267
 SANTA CRUZ DA CONCEIÇÃO - SP



OSVALDO MARCHIORI
PREFEITO MUNICIPAL

ÁREAS (m ²)	
EXISTENTE	889,92m ²
A CONSTRUIR	437,17m ²
TOTAL	1267,09m ²

RESPONSÁVEL TÉCNICO
 ENG. MARCELO COMIN
 CREA Nº506033086/9

ESCALA INDICADA

- APPROVAÇÃO
- EXISTENTE
 - ⇒ AMPLIAR E REFORMAR
 - ⇒ CONSTRUIR